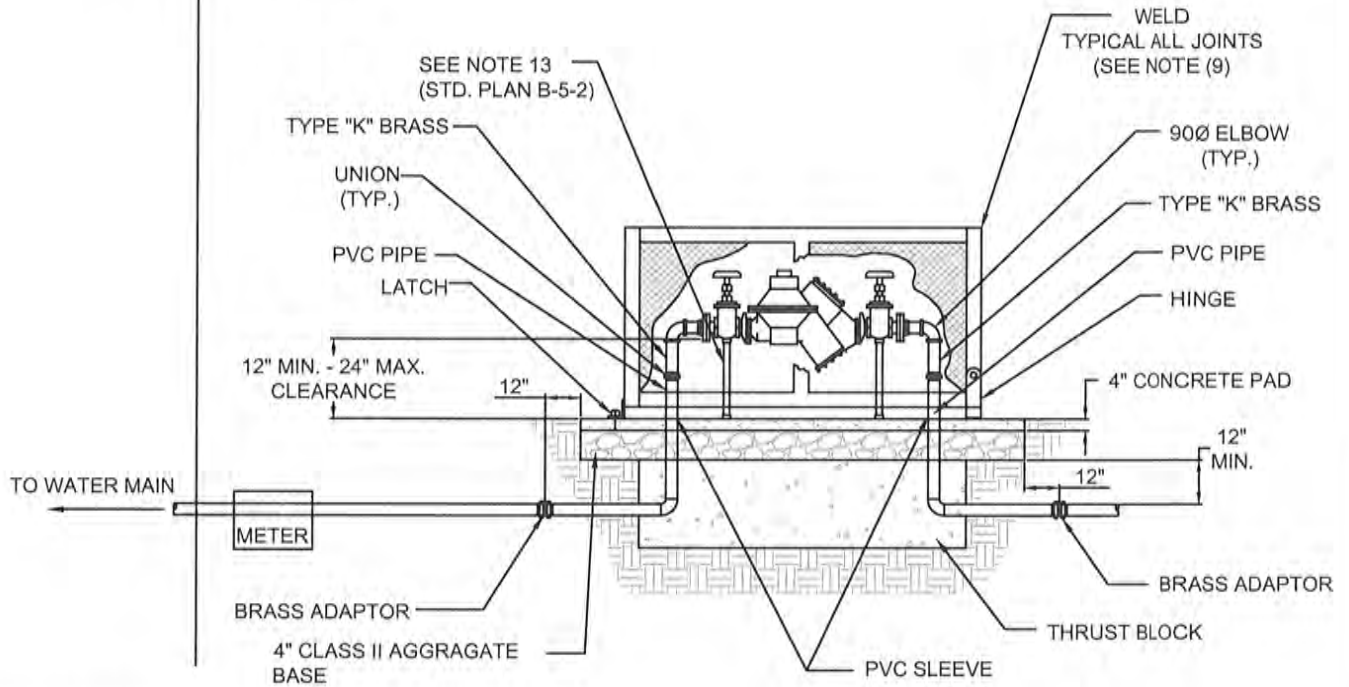


SYMBOL ON PLAN



RIGHT OF WAY

P.U.E./P.S.E.
PRIVATE PROPERTY



P.U.E: PUBLIC UTILITY EASEMENT
P.S.E: PUBLIC SERVICES EASEMENT

NOTES:

1. ALL PIPE FITTINGS SHALL BE SCHEDULE 40, GALVANIZED STEEL UNLESS OTHERWISE SPECIFIED.
2. CONCRETE SHALL BE 450-C-2000 PCC.
3. THE BACK FLOW PREVENTER DEVICES AND INSTALLATIONS SHALL BE APPROVED BY THE LOCAL DEPARTMENT OF HEALTH SERVICES AND WATER AGENCY. (FFBCO 825Y REDUCED PRESSURE PRINCIPLE-TYPE BACKFLOW ASSEMBLY) PROVIDE INSULATION JACKET TO THE BACKFLOW DEVICE.
4. VALVE ASSEMBLIES MAY HAVE THREADED FITTINGS OR FLANGED FITTINGS.
5. COAT ALL EXPOSED THREADS WITH AN APPROVED RUST INHIBITING SEALANT.
6. APPROVED PLASTIC TAPE 1/2" WIDE SHALL BE USED ON ALL THREADED CONNECTIONS.
7. DISSIMILAR METALS SHALL BE SEPARATED BY AN APPROVED DIELECTRIC COUPLING.
8. PLASTIC PIPE SHALL NOT BE USED ABOVE FINISHED GRADE.
9. BACKFLOW ENCLOSURE COLD ROLLED STEEL BC-75CR 75" LENGTH X 42" HEIGHT X 30" WIDTH WITH GREEN PLASTICOTE POWDER COAT FINISH (SEE WWW.VITPRODUCTS.COM)

TITLE:

IRRIGATION BACKFLOW PREVENTER ASSEMBLY (REDUCED PRESSURE TYPE)

AUTOCAD BY:
STAFF

SCALE:
NONE

APPROVED:

STANDARD PLAN

REVIEWED BY:
DANNY HILLSTOCK

REVISED:
OCTOBER, 2019

Danny Hillstock
CITY ENGINEER: DANNY HILLSTOCK LIC. NO. 70847

11-5-19
DATE

G-4

CITY OF HOLLISTER
ENGINEERING DEPARTMENT

SHEET 1 OF 1