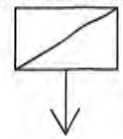
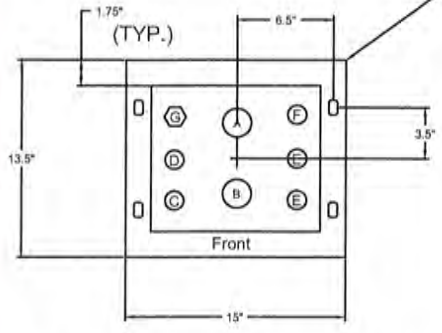


SYMBOL ON PLAN

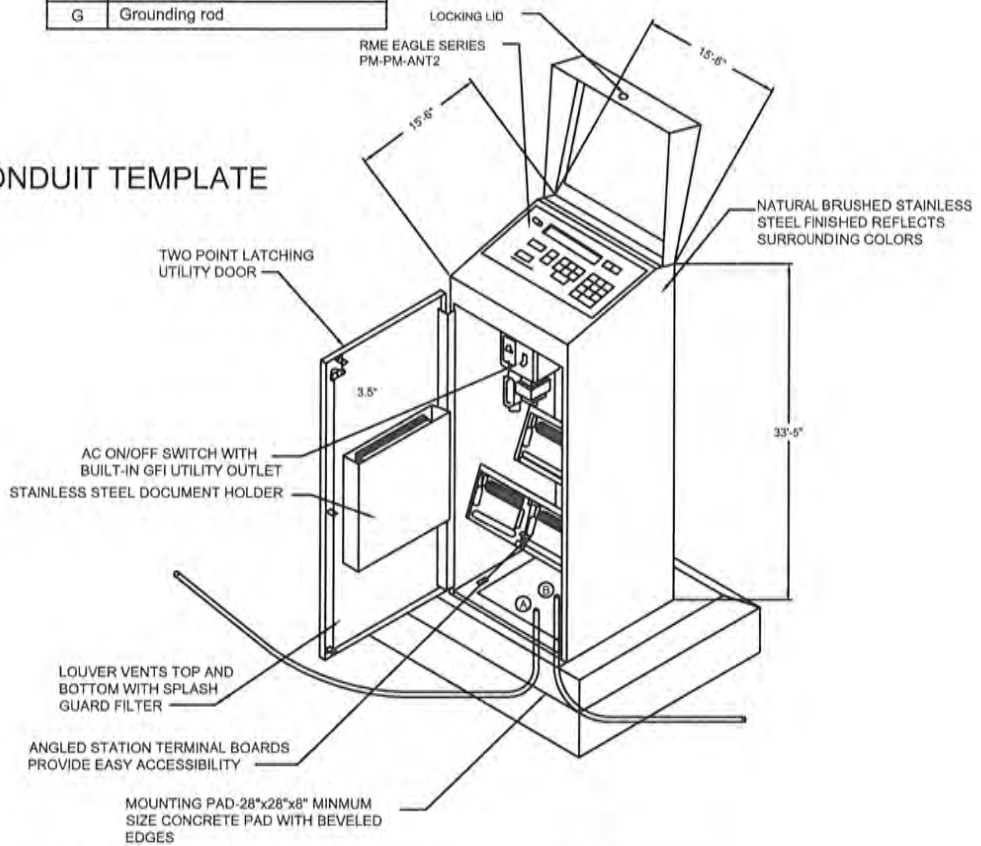


BOLT HOLES- STAINLESS
STEEL HARDWARE
STANDARD WITH
ENCLOSURE



Item	Description
A,B	2" conduit-station wiring
C	1" conduit-communication
D	AC power conduit
E	1" conduit-sensor wiring
F	External antenna
G	Grounding rod

MOUNTING BOLT AND CONDUIT TEMPLATE



NOTES:

- IRRIGATION CONTROLLER SHALL BE "TORO IRRIGATION CONTROLLER 96-STATION SENTINEL SATELLITE" IN A "FLIP TOP", NATURAL BRUSHED STAINLESS STEEL ENCLOSURE.
- CONTROLLER SHALL HAVE WEATHER SATIATION AND SOFTWARE DAVIS INSTRUMENTS VANTAGE PRO2 PLUS, MODEL 6162. WEATHER STATION SHALL TRANSMIT DATA VIA INTEGRAL SOLAR POWERED RADIO TRANSMITTER TO THE WEATHER STATION CONSOLE INCLUDED WITH MODEL 6162. WEATHER STATION CONSOLE DATA LOGGER WITH SERIAL CONNECTION SHALL BE PART NO. 6510SER. SERIAL CABLE SHALL CONNECT TO CONSOLE AND RAVEN WIRELESS DATA MODEM. RAVEN WIRELESS DATA MODEM SHALL BE PART NO. ESB-WDM IRRIGATION CENTRAL CONTROL COMPUTER AND SOFTWARE SHALL BE TORO SENTINEL CENTRAL CONTROL, PART NO. SGIS-0-1, TO BE INSTALLED BY REPRESENTATIVE.
- AREA AROUND BASE MAY BE PLANTED, HARD SURFACE OR COMBINATION
- TOP OF CONCRETE FOUNDATION
1/2" ABOVE GRADE FOR LAWN
1" ABOVE GRADE FOR GROUND COVER OR SHRUBS.
- CONCRETE MOUNTING PAD SHALL BE 450-C-2000 PCC.

TITLE: **IRRIGATION ELECTRICAL CONTROLLER**

DRAWN BY: STAFF	SCALE: NONE
REVIEWED BY: DANNY HILLSTOCK	REVISED: OCTOBER, 2019

APPROVED:
Danny Hillstock
CITY ENGINEER: DANNY HILLSTOCK, C.I.C. NO. 70647

11-5-19
DATE

STANDARD PLAN
G-3
SHEET 1 OF 1

CITY OF HOLLISTER
ENGINEERING DEPARTMENT