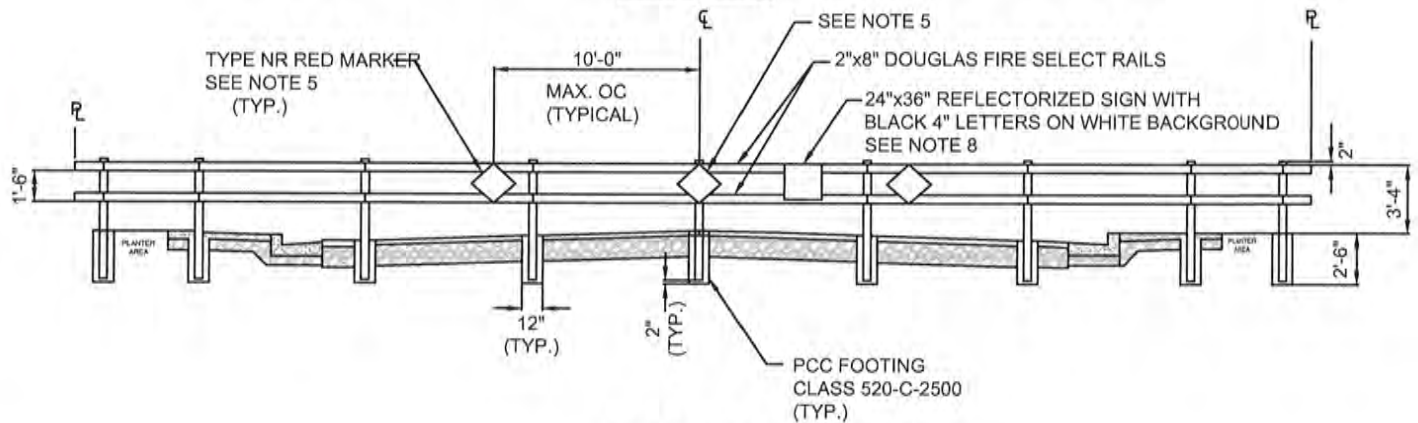


PLAN VIEW



ELEVATION

NOTES:

1. INSTALL 4"x4" REDWOOD OR PRESSURE TREATED DOUGLAS FIR POSTS AT NO MORE THAN 8' O.C. IN 12" DIAMETER PCC FOOTING. CUT POST TOPS WITH 1/2" BEVELED SLOPE TO THE REAR OF THE BARRICADE.
2. RAILS SHALL BE 2"x8"x16' LONG DOUGLAS FIR SELECT GRADE.
3. ATTACH RAILS WITH 1/2"x6" GALVANIZED CARRIAGE BOLTS, WITH FLAT WASHERS & LOCK WASHER. USE 2 PER RAIL AT EACH POST.
4. PAINT ALL EXPOSED WOOD WITH ONE COAT OF EXTERIOR WOOD PRIMER AND TWO COATS OF EXTERIOR WHITE HI-GLOSS ENAMEL.
5. INSTALL 18"x18" TYPE NR (RED REFLECTIVE BACKGROUND) MARKERS ACROSS THE FULL WIDTH OF DEAD END STREETS. INSTALL 18"x18" TYPE NY (YELLOW REFLECTIVE BACKGROUND) AS REQUIRED BY THE CITY ENGINEER.
6. ALL IMPROVEMENTS SHALL EXTEND TO THE PHASE LINE ON PHASED PROJECTS AND THE RIGHT-OF-WAY ON NON-PHASED PROJECTS.
7. WITH THE APPROVAL OF THE CITY ENGINEER, HEADER BOARD MAY BE ELIMINATED ON PHASED DEVELOPMENTS PROVIDED SUBGRADE PREPARATION, AGGREGATE BASE AND PAVEMENT ARE EXTENDED 12" BEYOND THE CURB AND GUTTER LIMITS.
8. SIGN TO READ, "FUTURE THROUGH STREET SUBJECT TO INCREASED TRAFFIC".

TITLE: DEAD END STREET BARRICADE			
DRAWN BY: STAFF	SCALE: NONE	APPROVED: 	STANDARD PLAN
REVIEWED BY: DANNY HILLSTOCK	REVISED: OCTOBER, 2019	11-5-19 DATE	A-15
CITY OF HOLLISTER ENGINEERING DEPARTMENT		CITY ENGINEER: DANNY HILLSTOCK Lic. NO. 70647	SHEET 1 OF 1